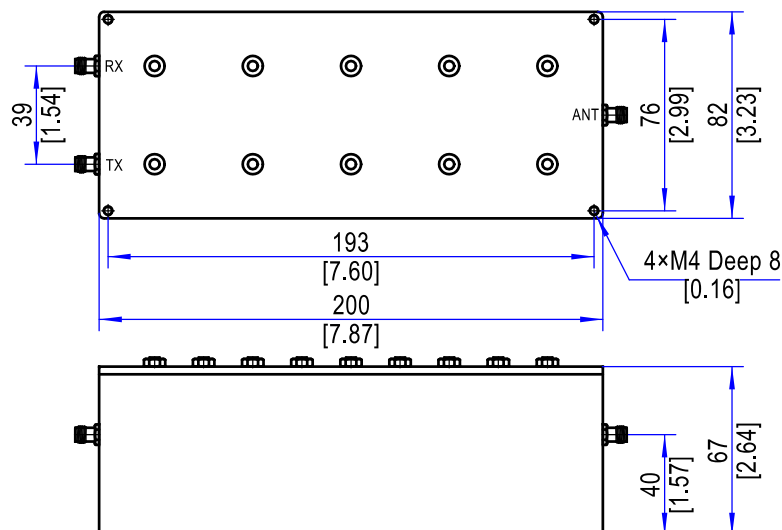


YSDPX20-R43305-R476-S

0.43305-0.476 GHz Cavity Duplexer, 20 W, SMA Connector

Electrical Specifications			
NO.	Parameters	RX	TX
1	Pass Band Frequency	433.05-434.79 MHz	470-476 MHz
2	Center Frequency(F0)	433.92 MHz	473 MHz
3	Insertion Loss	≤1.5 dB	≤1.7 dB
4	Pass Band Ripple	≤0.5 dB	≤0.5 dB
5	Return Loss	≥18 dB	≥18 dB
6	Isolation	≥80 dB @ 433.05-434.79 MHz, 470-476 MHz	
7	Power Handling	≤20 W	
8	Impedance	50 Ω	
Environmental Characteristics			
1	Operating Temperature	-20°C to +60°C	
Mechanical Characteristics			
1	Connectors	SMA Female	
2	Surface Finishing	Black Painted Finish	
3	Dimensions ¹	200×82×67 mm / [7.87×3.23×2.64 in]	
4	weight	1230 g	

Outline Drawing (Units: mm/[inch], Tolerance: ±0.3 mm)



Note 1: Excluding Connectors