

YSDC500-2-4-50-L29

Directional Coupler, 500 W, 2-4 GHz, 50 dB coupling, 7/16 DIN

Key Features

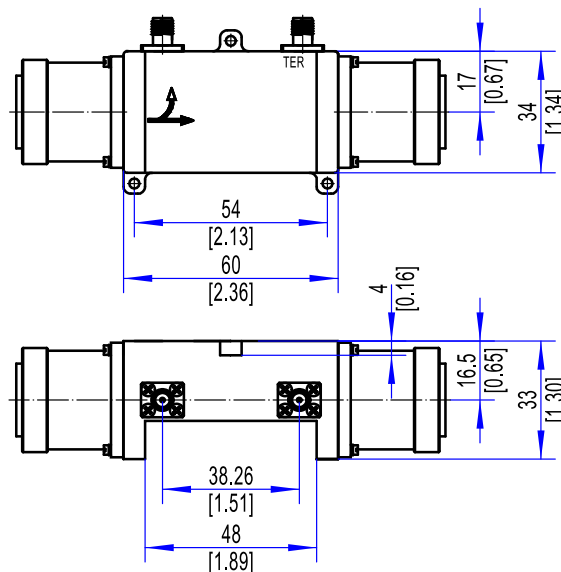
- 2-4 GHz wideband
- High power handling
- 50 dB high directivity coupling
- Low insertion loss
- Stable coupling flatness

Applications

- RF power monitoring and sampling
- Test & measurement systems
- Communication system integration
- Transmitter signal feedback and control
- RF laboratory and EMC testing

Electrical Specifications		
1	Frequency Range	2-4 GHz
2	Coupling	50 ±1.0 dB
3	Coupling Flatness	≤ ±0.8 dB
4	Insertion Loss	≤1.3:1
5	Main Line VSWR	≤1.5:1
6	Insertion Loss	≤0.4 dB
7	Directivity	≥15 dB
8	Power	500 W
Environmental Specifications		
1	Operating Temperature	-55°C to +85°C
Mechanical Specifications		
1	Connectors	7/16 DIN(L29-Type) Female / SMA
2	Surface Finishing	Natural Conductive Oxidation
3	Dimensions ¹	60×34×33 mm / [2.36×1.34×1.30 in]

Outline Drawing (Units: mm/[inch], Tolerance: ±0.3 mm)



Note 1: Excluding Connector size