

YSDC2K-R5-2-50-L52

Directional Coupler, 2 KW, 0.5-2 GHz, 50 dB coupling, L52-Type

Key Features

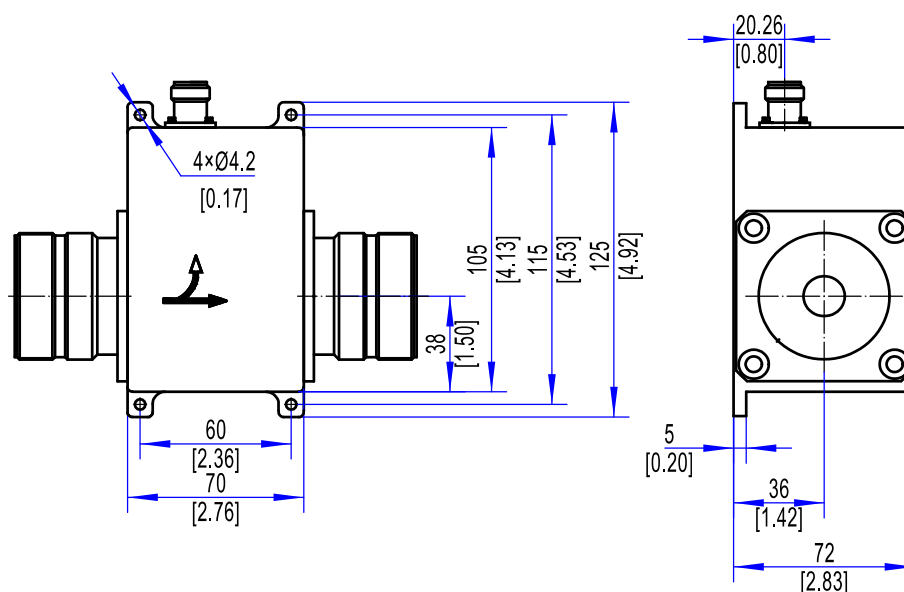
- 0.5-2GHz wideband
- 2 KW high power handling
- 50 dB precise coupling
- Low insertion loss
- Good directivity

Applications

- RF signal monitoring
- VHF/UHF systems
- Test & measurement
- Transmitter systems
- Lab & integration use

Electrical Specifications		
1	Frequency Range	0.5-2 GHz
2	Coupling	50 ±1.0 dB
3	Coupling Flatness	≤ ±0.8 dB
4	Insertion Loss	≤0.35 dB
5	Main Line VSWR	≤1.25:1
6	Directivity	≥18 dB
7	Power	2 KW(CW)
Environmental Specifications		
1	Operating Temperature	-10°C to +60°C
Mechanical Specifications		
1	Connectors	L52-Type male / N-Type Female
2	Surface Finishing	Natural Conductive Oxidation
3	Dimensions ¹	70×125×72 mm / [2.76×4.92×2.83 in]

Outline Drawing (Units: mm/[inch], Tolerance: ±0.3 mm)



Note 1: Excluding Connector size