

YSDC200-6-18-30-N

Directional Coupler, 200 W, 6-18 GHz, 30 dB coupling, N-Type

Key Features

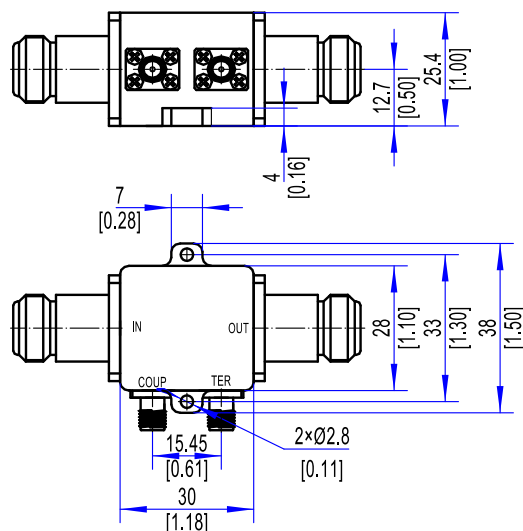
- Ultra-Wideband 6-18 GHz Coverage
- Stable 30 dB Coupling Across Band
- Low Insertion Loss & Good Directivity
- High Power Handling up to 200 W
- Compact Design with N-Type Connectors

Applications

- Broadband RF & Microwave Systems
- Signal Sampling & Power Monitoring
- Radar & Electronic Warfare Systems
- Satellite & Communication Systems
- Test & Measurement Applications

Electrical Specifications		
1	Frequency Range	6-18 GHz
2	Coupling	30 ±1.5 dB
3	Coupling Flatness	≤ ±0.8 dB
4	Insertion Loss	≤0.5 dB
5	Main Line VSWR	≤1.5:1
6	Secondary Line VSWR	≤1.8:1
7	Directivity	≥10 dB
8	Power	200 W(CW)
Environmental Specifications		
1	Operating Temperature	-55°C to +85°C
Mechanical Specifications		
1	Connectors	N-Type Female / SMA Female
2	Surface Finishing	Natural Conductive Oxidation
3	Dimensions ¹	38×30×25.4 mm / [1.5×1.18×1.0 in]

Outline Drawing (Units: mm/[inch], Tolerance: ±0.3 mm)



Note 1: Excluding Connector size