

## YSDC100-1-12-20-N

Directional Coupler, 100 W, 1-12 GHz, 20 dB coupling, N-Type

### Key Features

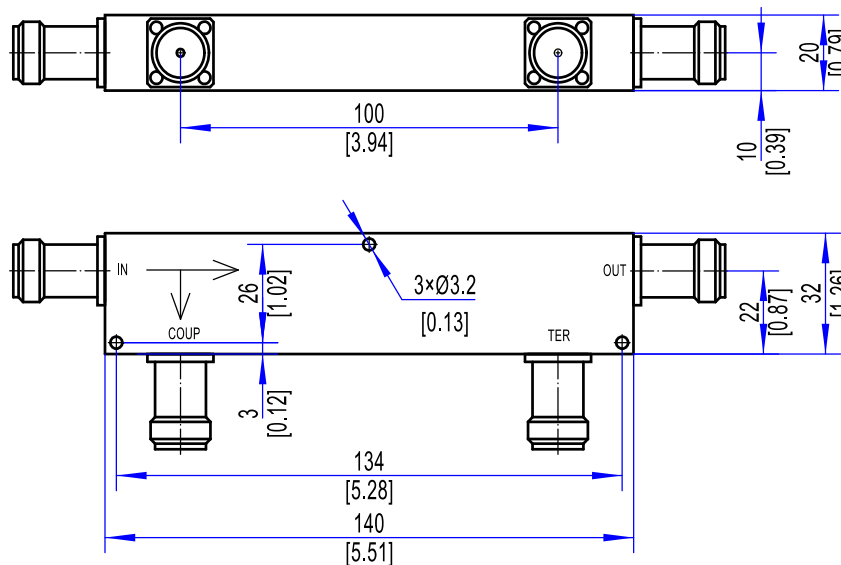
- 1-12 GHz ultra-wideband
- 20 dB nominal coupling ( $\pm 1$  dB)
- Low insertion loss ( $\leq 0.8$  dB typ.)
- Compact N-Type female interface
- 100 W CW power handling

### Applications

- Broadband test & measurement
- Signal monitoring & sampling
- Radar & communication systems
- Power measurement setups
- High-frequency module integration

Electrical Specifications		
1	Frequency Range	1-12 GHz
2	Coupling	20 $\pm$ 1.0 dB
3	Coupling Flatness	$\leq \pm 0.6$ dB
4	Main Line VSWR	$\leq 1.4:1$
5	Secondary Line VSWR	$\leq 1.5:1$
6	Insertion Loss	$\leq 0.8$ dB
7	Directivity	$\geq 12$ dB
8	Power	100 W(CW)
Environmental Specifications		
1	Operating Temperature	-55°C to +85°C
Mechanical Specifications		
1	Connectors	SMA Female
2	Surface Finishing	Natural Conductive Oxidation
3	Dimensions <sup>1</sup>	140×32×20 mm / [5.51×1.26×0.79 in]

### Outline Drawing (Units: mm/[inch], Tolerance: $\pm 0.3$ mm)



Note 1: Excluding Connector size