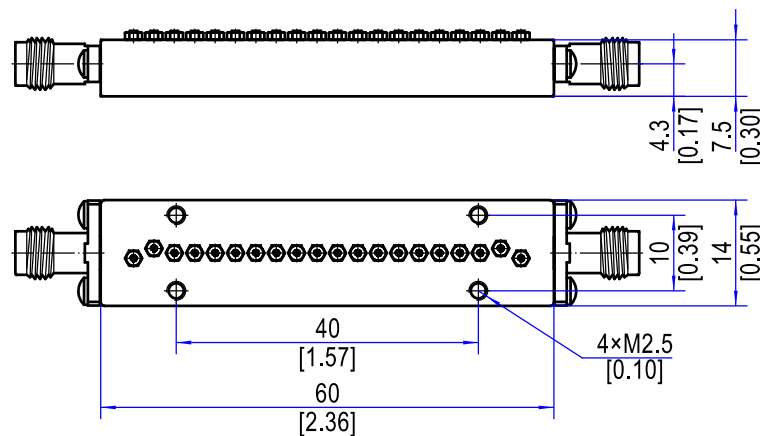


YSCVBP5-46R5-13-V

40-53 GHz Comb Band Pass Filter, 5 W, 1.85 mm Connector

Electrical Specifications		
1	Pass Band Frequency	40-53 GHz
2	Center Frequency(F0)	46.5 GHz
3	Insertion Loss	≤1.35 dB
4	Return Loss	≥16 dB
5	Pass Band Ripple	≤0.6 dB
6	Stop band Rejection	≥80 dB @ DC-38.1 GHz ≥55 dB @ 55-56.3 GHz ≥80 dB @ 56.3-67 GHz ≥40 dB @ 67-68 GHz
7	Power Handling	≤5 W
8	Impedance	50 Ω
Environmental Characteristics		
1	Operating Temperature	-30°C to +70°C
Mechanical Characteristics		
1	Connectors	1.85 mm Female
2	Surface Finishing	Black Painted Finish
3	Dimensions ¹	60*14*7.5 mm / [2.36*0.55*0.30 in]
4	weight	49 g

Outline Drawing (Units: mm/[inch], Tolerance: ±0.3 mm)



Note 1: Excluding Connectors