

YS8WPD200-1R8-1R88-S

8-Way Wilkinson Power Divider, 200 W, 1.805-1.88 GHz, SMA

Key Features

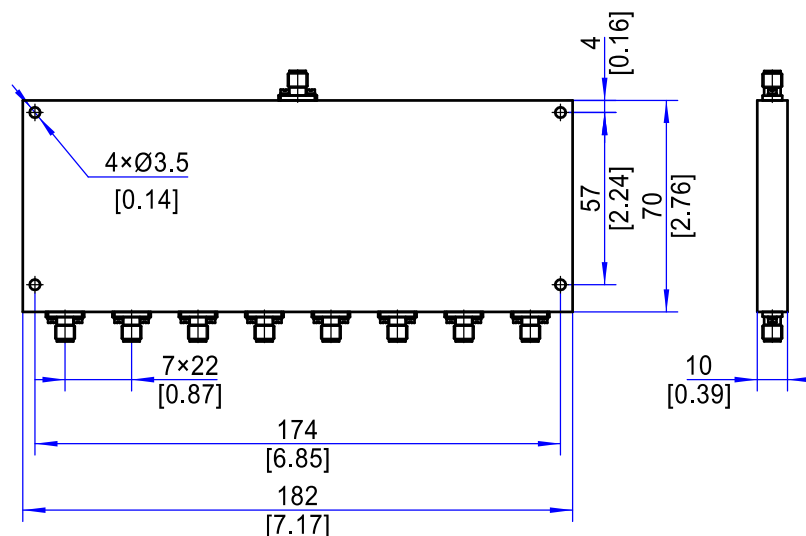
- 1.805-1.88 GHz Wideband Coverage
- Low Insertion Loss
- Excellent Amplitude & Phase Balance
- High Isolation (≥ 18 dB)
- 200 W Power Handling

Applications

- RF & Microwave Systems
- Test & Measurement
- Radar & EW Systems
- Communication Networks
- Signal Distribution

Electrical Specifications		
1	Frequency Range	1.805-1.88 GHz
2	Insertion Loss	≤ 0.9 dB
3	Input Port VSWR	$\leq 1.4:1$
4	Isolation	≥ 18 dB
5	Amplitude Balance	$\leq \pm 0.2$ dB
6	Phase Balance	$\leq \pm 4^\circ$
7	Power Handling	Forward Power: 200 W; Reverse Power: 10 W
8	Impedance	50 Ω
Environmental Specifications		
1	Operating Temperature	-55°C to +85°C
Mechanical Specifications		
1	Connectors	SMA Female
2	Surface Finishing	Silver Plating
3	Dimensions ¹	182×70×10 mm / [7.17×2.76×0.39 in]

Outline Drawing (Units: mm/[inch], Tolerance: ± 0.3 mm)



Note 1: Excluding Connectors